

**JAN 30 - FEB 5, 2023**

The Queens luxury real estate market, defined as all properties priced \$1M and above, saw 31 contracts signed this week, made up of 7 condos, and 24 houses. The previous week saw 33 deals. For more information or data, please reach out to a Compass agent.

**\$1,408,205**

Average Asking Price

**\$1,270,000**

Median Asking Price

**\$816**

Average PPSF

**4%**

Average Discount

**\$43,654,343**

Total Volume

**140**

Average Days On Market

5-03 Parsons Boulevard entered contract this week, with a last asking price of \$2,250,000. This single-family home has 4 beds and 4 full baths. It features a large den, a family room, custom cabinetry, high-end appliances throughout, a built-in surround sound system, a wine central, high-ceilings, radiant heating, heated marble floors, and much more.

Also signed this week was 85-07 Abingdon Road in Kew Gardens, with a last asking price of \$2,100,000. Originally built in 1920, this single-family house spans 3,918 square feet with 5 beds and 4 full baths. It features a large living room, a formal dining room, a den and office, a large eat-in kitchen, a whole-house water filtration system, a yard sprinkler system, and much more.

**7**

Condo Deal(s)

**0**

Co-op Deal(s)

**24**

Townhouse Deal(s)

**\$1,423,098**

Average Asking Price

**\$0**

Average Asking Price

**\$1,403,861**

Average Asking Price

**\$1,420,000**

Median Asking Price

**\$0**

Median Asking Price

**\$1,254,500**

Median Asking Price

**\$1,528**

Average PPSF

**N/A**

Average PPSF

**\$589**

Average PPSF

**943**

Average SqFt

**N/A**

Average SqFt

**2,442**

Average SqFt



### 5-03 PARSONS BLVD

Whitestone

Type	Townhouse	Status	Contract
SqFt	N/A	Beds	4
PPSF	N/A	Fees	\$1,498

Ask	\$2,250,000
Baths	4
DOM	308



### 85-07 ABINGDON RD

Kew Gardens

Type	Townhouse	Status	Contract
SqFt	3,918	Beds	5
PPSF	\$536	Fees	\$1,073

Ask	\$2,100,000
Baths	4
DOM	21

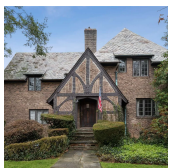


### 42-28 68 ST

Maspeth

Type	Townhouse	Status	Contract
SqFt	N/A	Beds	6
PPSF	N/A	Fees	N/A

Ask	\$1,950,000
Baths	2
DOM	178

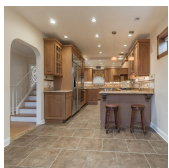


### 19 WARWICK AVE

Douglaston

Type	Townhouse	Status	Contract
SqFt	3,300	Beds	4
PPSF	\$561	Fees	\$1,594

Ask	\$1,850,000
Baths	3
DOM	27

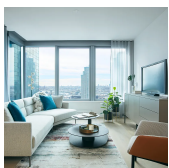


### 3-34 PARSONS BLVD

Whitestone

Type	Townhouse	Status	Contract
SqFt	2,350	Beds	4
PPSF	\$764	Fees	\$1,267

Ask	\$1,795,000
Baths	2
DOM	418



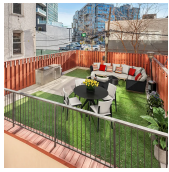
### 3 COURT SQUARE #5309

Hunters Point

Type	Condo	Status	Contract
SqFt	975	Beds	2
PPSF	\$1,834	Fees	\$2,114

Ask	\$1,788,121
Baths	2
DOM	253

Compass is a licensed real estate broker and abides by Equal Housing Opportunity laws. All material presented herein is intended for informational purposes only. Information is compiled from sources deemed reliable but is subject to errors, omissions, changes in price, condition, sale, or withdrawal without notice. No statement is made as to the accuracy of any description. All measurements and square footages are approximate. This is not intended to solicit property already listed. Nothing herein shall be construed as legal, accounting or other professional advice outside the realm of real estate brokerage.

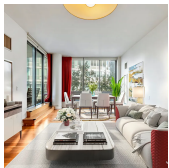


### 21-30 45 RD #2

<b>Type</b>	Condo	<b>Status</b>	Contract
<b>Sqft</b>	1,292	<b>Beds</b>	2
<b>PPSF</b>	\$1,336	<b>Fees</b>	\$1,537

### Hunters Point

<b>Ask</b>	\$1,725,000
<b>Baths</b>	2
<b>DOM</b>	51



### 46-30 CENTER BLVD #202

<b>Type</b>	Condo	<b>Status</b>	Contract
<b>Sqft</b>	1,159	<b>Beds</b>	2
<b>PPSF</b>	\$1,424	<b>Fees</b>	\$1,087

### Hunters Point

<b>Ask</b>	\$1,650,000
<b>Baths</b>	2
<b>DOM</b>	65

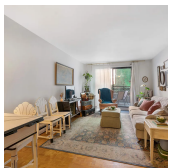


### 32-73 33 ST

<b>Type</b>	Townhouse	<b>Status</b>	Contract
<b>Sqft</b>	2,560	<b>Beds</b>	5
<b>PPSF</b>	\$614	<b>Fees</b>	\$789

### Astoria

<b>Ask</b>	\$1,570,000
<b>Baths</b>	3
<b>DOM</b>	282

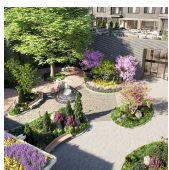


### 31-44 29 ST #1

<b>Type</b>	Multihouse	<b>Status</b>	Contract
<b>Sqft</b>	2,300	<b>Beds</b>	5
<b>PPSF</b>	\$653	<b>Fees</b>	\$448

### Astoria

<b>Ask</b>	\$1,500,000
<b>Baths</b>	5
<b>DOM</b>	147



### 45-30 PEARSON ST #16D

<b>Type</b>	Condo	<b>Status</b>	Contract
<b>Sqft</b>	873	<b>Beds</b>	2
<b>PPSF</b>	\$1,627	<b>Fees</b>	\$1,489

### Hunters Point

<b>Ask</b>	\$1,420,000
<b>Baths</b>	2
<b>DOM</b>	N/A



### 35-11 166TH ST

<b>Type</b>	Townhouse	<b>Status</b>	Contract
<b>Sqft</b>	3,800	<b>Beds</b>	7
<b>PPSF</b>	\$365	<b>Fees</b>	\$922

### Flushing

<b>Ask</b>	\$1,388,888
<b>Baths</b>	4
<b>DOM</b>	106

Compass is a licensed real estate broker and abides by Equal Housing Opportunity laws. All material presented herein is intended for informational purposes only. Information is compiled from sources deemed reliable but is subject to errors, omissions, changes in price, condition, sale, or withdrawal without notice. No statement is made as to the accuracy of any description. All measurements and square footages are approximate. This is not intended to solicit property already listed. Nothing herein shall be construed as legal, accounting or other professional advice outside the realm of real estate brokerage.



### 72-66 YELLOWSTON BLVD

Forest Hills

Type	Multihouse	Status	Contract	Ask	\$1,360,000
Sqft	2,970	Beds	5	Baths	5
PPSF	\$458	Fees	\$693	DOM	126



### 64-18 48 AVE

Maspeth

Type	Multihouse	Status	Contract	Ask	\$1,350,000
Sqft	1,850	Beds	4	Baths	3
PPSF	\$730	Fees	\$360	DOM	38



### 119-23 143RD ST

Jamaica

Type	Townhouse	Status	Contract	Ask	\$1,299,999
Sqft	2,400	Beds	6	Baths	5
PPSF	\$542	Fees	\$427	DOM	46



### 64-16 BEACH FRONT RD

Arverne

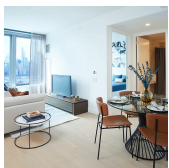
Type	Townhouse	Status	Contract	Ask	\$1,270,000
Sqft	3,180	Beds	4	Baths	4
PPSF	\$399	Fees	\$367	DOM	78



### 160-07 132ND AVE

Rochdale

Type	Townhouse	Status	Contract	Ask	\$1,239,000
Sqft	2,600	Beds	7	Baths	6
PPSF	\$477	Fees	\$318	DOM	48



### 3 COURT SQUARE #5903

Hunters Point

Type	Condo	Status	Contract	Ask	\$1,238,879
Sqft	687	Beds	1	Baths	1
PPSF	\$1,804	Fees	\$1,489	DOM	256

Compass is a licensed real estate broker and abides by Equal Housing Opportunity laws. All material presented herein is intended for informational purposes only. Information is compiled from sources deemed reliable but is subject to errors, omissions, changes in price, condition, sale, or withdrawal without notice. No statement is made as to the accuracy of any description. All measurements and square footages are approximate. This is not intended to solicit property already listed. Nothing herein shall be construed as legal, accounting or other professional advice outside the realm of real estate brokerage.



### 75-24 195TH ST

<b>Type</b>	Townhouse	<b>Status</b>	Contract
<b>Sqft</b>	2,400	<b>Beds</b>	4
<b>PPSF</b>	\$508	<b>Fees</b>	\$863

### Fresh Meadows

<b>Ask</b>	\$1,219,000
<b>Baths</b>	2
<b>DOM</b>	177



### 45-09 SKILLMAN AVE

<b>Type</b>	Townhouse	<b>Status</b>	Contract
<b>Sqft</b>	1,280	<b>Beds</b>	3
<b>PPSF</b>	\$952	<b>Fees</b>	\$572

### Sunnyside

<b>Ask</b>	\$1,218,000
<b>Baths</b>	2
<b>DOM</b>	63



### 152-19 ROOSEVELT AVE

<b>Type</b>	Townhouse	<b>Status</b>	Contract
<b>Sqft</b>	2,200	<b>Beds</b>	5
<b>PPSF</b>	\$545	<b>Fees</b>	\$7,193

### Flushing

<b>Ask</b>	\$1,199,888
<b>Baths</b>	2
<b>DOM</b>	10

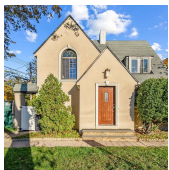


### 88-28 81ST AVE

<b>Type</b>	Townhouse	<b>Status</b>	Contract
<b>Sqft</b>	2,484	<b>Beds</b>	5
<b>PPSF</b>	\$479	<b>Fees</b>	\$722

### Glendale

<b>Ask</b>	\$1,188,888
<b>Baths</b>	4
<b>DOM</b>	72



### 32-01 150 PL

<b>Type</b>	Townhouse	<b>Status</b>	Contract
<b>Sqft</b>	1,456	<b>Beds</b>	3
<b>PPSF</b>	\$816	<b>Fees</b>	\$780

### Murray Hill

<b>Ask</b>	\$1,188,000
<b>Baths</b>	2.5
<b>DOM</b>	96



### 31-21 101ST ST

<b>Type</b>	Townhouse	<b>Status</b>	Contract
<b>Sqft</b>	1,600	<b>Beds</b>	5
<b>PPSF</b>	\$725	<b>Fees</b>	\$586

### Elmhurst

<b>Ask</b>	\$1,160,000
<b>Baths</b>	2
<b>DOM</b>	157

Compass is a licensed real estate broker and abides by Equal Housing Opportunity laws. All material presented herein is intended for informational purposes only. Information is compiled from sources deemed reliable but is subject to errors, omissions, changes in price, condition, sale, or withdrawal without notice. No statement is made as to the accuracy of any description. All measurements and square footages are approximate. This is not intended to solicit property already listed. Nothing herein shall be construed as legal, accounting or other professional advice outside the realm of real estate brokerage.



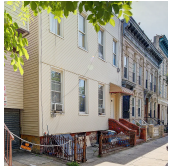
### 61-62 71ST ST

Middle Village

**Type** Townhouse  
**Sqft** 2,846  
**PPSF** \$408

**Status** Contract  
**Beds** 4  
**Fees** \$825

**Ask** \$1,160,000  
**Baths** 3  
**DOM** 169



### 11 ST JOHNS RD

Ridgewood

**Type** Townhouse  
**Sqft** 2,496  
**PPSF** \$461

**Status** Contract  
**Beds** 7  
**Fees** N/A

**Ask** \$1,150,000  
**Baths** 3  
**DOM** 324



### 11-12 44 DR #2F

Hunters Point

**Type** Condo  
**Sqft** 767  
**PPSF** \$1,467

**Status** Contract  
**Beds** 1  
**Fees** \$1,171

**Ask** \$1,125,000  
**Baths** 1  
**DOM** N/A



### 76-29 271ST ST

Glen Oaks

**Type** Townhouse  
**Sqft** 1,650  
**PPSF** \$666

**Status** Contract  
**Beds** 6  
**Fees** \$724

**Ask** \$1,099,000  
**Baths** 3  
**DOM** 95



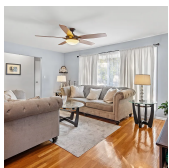
### 149-22 32ND AVE

Flushing

**Type** Townhouse  
**Sqft** 2,875  
**PPSF** \$382

**Status** Contract  
**Beds** 3  
**Fees** \$911

**Ask** \$1,099,000  
**Baths** 2  
**DOM** 7



### 24-37 160 ST

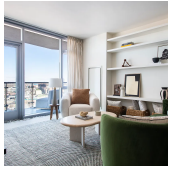
Whitestone

**Type** Townhouse  
**Sqft** 1,198  
**PPSF** \$909

**Status** Contract  
**Beds** 3  
**Fees** \$862

**Ask** \$1,088,000  
**Baths** 1  
**DOM** 115

Compass is a licensed real estate broker and abides by Equal Housing Opportunity laws. All material presented herein is intended for informational purposes only. Information is compiled from sources deemed reliable but is subject to errors, omissions, changes in price, condition, sale, or withdrawal without notice. No statement is made as to the accuracy of any description. All measurements and square footages are approximate. This is not intended to solicit property already listed. Nothing herein shall be construed as legal, accounting or other professional advice outside the realm of real estate brokerage.



### 133-36 37 AVE #11G

**Type** Condo  
**Sqft** 845  
**PPSF** \$1,201

**Status** Contract  
**Beds** 1  
**Fees** \$1,058

### Flushing

**Ask** \$1,014,680  
**Baths** 1  
**DOM** 315

Compass is a licensed real estate broker and abides by Equal Housing Opportunity laws. All material presented herein is intended for informational purposes only. Information is compiled from sources deemed reliable but is subject to errors, omissions, changes in price, condition, sale, or withdrawal without notice. No statement is made as to the accuracy of any description. All measurements and square footages are approximate. This is not intended to solicit property already listed. Nothing herein shall be construed as legal, accounting or other professional advice outside the realm of real estate brokerage.